



# Kinross-shire Parish Church

*Worshipping God*

*Following Christ*

*Serving the Community*

## Parish Profile 2025



The Church of Scotland

**OSCR**  
Scottish Charity Regulator  
[www.oscr.org.uk](http://www.oscr.org.uk)

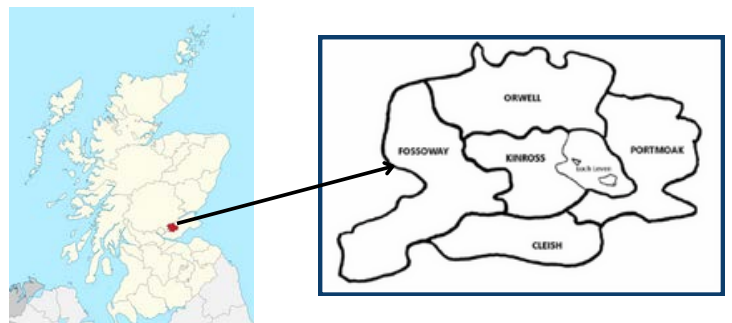
Registered  
Charity  
SC015523

# Welcome to Our Parish

**Kinross-shire: a rich blend of natural beauty, historical charm, and community spirit.**

Welcome to Kinross-shire Parish Church, a faith community rooted in three locations across this picturesque part of east-central Scotland. Nestled around the stunning Loch Leven, we are honoured to serve the town of Kinross and the surrounding rural areas of Kinross-shire, and take pride in being part of the life of the communities we serve.

Kinross-shire Parish Church came into being on 1<sup>st</sup> January 2025, as a result of the union between four former parishes of Cleish, Fossoway, Kinross and Orwell and Portmoak, along with transference of the responsibility for the former parish of Arngask, centred on the village of Glenfarg.



The four churches went beyond the original scope of the Presbytery of Perth Mission Plan in uniting to a single congregation. Our united charge has been allocated 2 FTE ministers of Word and Sacrament. One charge within this Team Ministry is currently vacant, and we are now seeking a full-time minister to serve alongside Rev. Alan Reid, our existing minister and Moderator of the Kirk Session.



The vacancy arose from the retiral of the Very Rev. Dr. Angus Morrison in September 2021 from the former Orwell and Portmoak Parish and, in November 2023, the calling of Rev. Lis Stenhouse from the former Cleish and Fossoway Parishes to the parishes of Aberlady and Gullane in East Lothian .





## OUR WORSHIP CENTRES

Our three worship centres work together in unity and people from across the parish and from all walks of life attend each. However, by location, they have traditionally served distinct communities.



**Fossoway Church**, situated in the village of Crook of Devon, has served a largely rural community that sits in the south-west of the united parish and includes the hamlet of Cleish.

**Address: St Serf's Road, Crook of Devon  
KY13 0PQ**

**Kinross Church**, based in the heart of Kinross, has traditionally largely served the population of the town.

**Address: Station Road, Kinross KY13 8TG**



**Orwell Church**, on the hill overlooking the village of Milnathort, has traditionally served a mixed community of villagers and a rural community, including the ancient parish of Portmoak, encompassing the villages of Kinnesswood and Scotlandwell.

**Address: Ba'hill, Milnathort, KY13 9YQ**

# Our Vision

## Worshipping God ~ Following Christ ~ Serving the Community

Our primary purpose is to be a vibrant, joyful, outward-facing gathering of people who want to worship God, to welcome others to join us in following Christ, and to serve the community of Kinross-shire and our global neighbours. We consider ourselves as proactive locally, engaging with a host of community events and activities including having a regular presence at the monthly Kinross Farmers Market, and the annual Fossoway Gathering and Better Place to Live Fair, celebrating and promoting the best of Kinross-shire.



As we settle into our union, we have recently established a team structure to offer every elder and, where they wish it, any member of the congregation, the opportunity to contribute to the congregational mission. This initial framework is a starting point which will evolve.

Our Kirk Session recently voted – very narrowly – not to depart from the Church’s traditional understanding of marriage, choosing not to extend a call to ministers in same-sex relationships. The closeness of this decision reflected a spectrum of heartfelt convictions among not only those who voted but in our wider church family. While we are grateful that our constitution actively promotes open debate, we acknowledge the real pain and division it has brought to many. This moment has stretched us spiritually and relationally, prompting reflection and conversation as we seek healing and understanding. We want to be clear that we remain committed to being a church that seeks to genuinely welcome, value, love and affirm the worth of every individual. Though perspectives may vary, we believe we are united in our calling to be a community led by the word of God and shaped by compassion, grace and openness to all.





## Our New Minister

The journey of forming our newly united parish is off to a positive start, as the new Kirk Session starts to come together to build a structure fit for the future. The upcoming appointment of a new minister to serve within our Team Ministry presents a fantastic opportunity to build on this foundation. Together, we are committed to moving forward as one church family, guided by the Church of Scotland's Five Marks of Mission and strengthened by the gifts and dedication we already share. More information on the Bases of Readjustment of our united parish, which includes the Basis of Team Ministry, is available at this link: **[Kinross-shire Parish Church Bases of Readjustment](#)**.

We are excited to welcome a minister who brings energy, warmth, and a deep understanding of people – someone who can nurture, support, and encourage the continued coming together of our distinct communities, alongside our existing minister and Moderator of the Kirk Session, Rev. Alan Reid, minister of charge A, and locally funded Associate Minister Robert Calvert and other key team members.

We seek a minister for charge B who will inspire and lead with vision and purpose alongside our existing team, to help grow, strengthen and cultivate our vibrant worshipping community. As a parish committed to Team Ministry, we are looking for someone who understands that collaboration is at the heart of effective ministry. We value open-mindedness, flexibility, and relational strength. The ability to listen well, build meaningful connections, and contribute a complementary blend of skills is essential. If you are someone who appreciates and encourages a range of perspectives, thrives in partnership and is gracious in teamwork, we would love to hear from you.

A recognised priority within our church will be ministry to our rural and farming communities, given the high proportion of the charge which is classed as such. The person filling the charge would have a passion for this ministry.

Someone also with a vision for how to build and nurture new worshipping communities is essential, particularly in the corners of the parish where buildings are closing or have closed. Additionally, the post holder will work as part of a team ministry that links with local youth work charity Kinross-shire Youth Enterprise (KYTHE). In 2024, the charity was awarded funds, through the Church of Scotland Seeds for Growth Fund, to develop its youth ministry. A role is currently in development and will be advertised in due course.



Together, we aim to move forward with clarity and confidence, reaching beyond the walls of the church to build on the strong foundations already laid in our local communities. There are many encouraging examples of community connection already in place, and we are eager to expand and deepen these relationships, ensuring that the message of Christ's love is shared widely and meaningfully across all areas of our parish.



# About us

## HISTORY OF THE CHARGE/CONGREGATION

Christian mission and ministry in Kinross-shire date back to the 6<sup>th</sup> Century and the Celtic mission of St Serf based for a time on St Serf's Inch, an island in Loch Leven. The historic parishes all derive from the Celtic mission, with three original churches established on the lochside but the sites of Church buildings changed as settlements were established. The secessions of the 18<sup>th</sup> and 19<sup>th</sup> centuries led to there being as many as 12 congregations of the reformed church in Kinross-shire. These have gradually reunited and there are very good relations with congregations of other denominations.

Our Mission Statement – **Kinross-shire Parish Church: Worshipping God, Following Christ, Serving the Community** – was agreed as one of the first acts of the united Kirk Session, having been derived from previous statements developed by some of the constituent congregations.

## CURRENT CONGREGATION

The Communion Roll at the start of 2025 was 1053. Adherents are included in these figures. Average attendance at Sunday morning worship is currently 274 across our various services.

The age profile of the congregation has most recently been estimated as:

- under 16 years - 9%
- 16-24 years - 2%
- 25-44 years - 9%
- 45-64 years - 21.5%
- 65-84 years - 54%
- over 84 years - 4.5%





## ELDERS AND KIRK SESSION

At the point of union, the four former Kirk Sessions became a single Kirk Session (Board of Trustees), but we have since worked to further shape the role of the Session as distinct from the active eldership. This addressed long-standing practices where these roles were viewed as interchangeable, even though they held distinct focus and different responsibilities. The decision was taken for the large group above to continue as the active eldership, but that only a proportion of this larger group - those expressing the wish to do so - would continue to also serve on the Kirk Session.

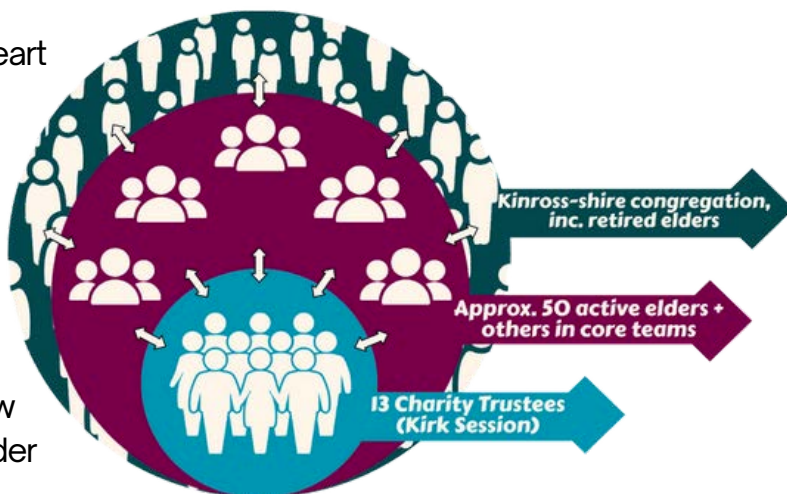
Our active eldership embodies the pastoral heart of our church's mission and we currently have a committed group of almost 50. All ordained elders are involved in the spiritual and relational life of the congregation, often the first point of contact for those seeking connection or assistance within the church, and are strongly encouraged to serve on one of the following five core teams in our new team structure, alongside members of the wider congregation:

- Worship and Discipleship
- Fellowship and Pastoral
- Outreach and Community
- Youth and Families
- Service, which includes sub-groups for Administration, Communication, Finance, and Property

Each of these teams has held meetings, begun to shape their key visions and establish priorities for the year ahead. This team structure will be reviewed after the first year.

A small group of 13, drawn from the above eldership body, now makes up the Kirk Session. This group carries the responsibility and accountability to oversee the governance of our church and its activities, for example ensuring compliance with charity regulations and managing legal and financial obligations.

The aim of this structure is to have a foundation for a thriving church community that is both spiritually enriched and organisationally robust.



The Eldership of Kinross-shire Parish, meeting together on 11 January 2025



## COMMUNITY PROFILE

Kinross-shire's population is about 15,000 people and this is set to grow in the next few years as house building increases in the area. Centred on the town of Kinross and with a number of significant villages and smaller hamlets, the largest part of the charge geographically is rural. However, it is in a strategic location, with good transport links to many major cities via the M90 and intercity bus links, as well as improved local connections thanks to the service of the Glenfarg Community Transport service.

Kinross-shire is also known for its scenic beauty, distinct historical connections to Scottish history and outdoor activities like fishing, golf, gliding and walking. Local orchestras and choirs meet and engender a real sense of community, and there is a dedicated live music venue at the Green Hotel. Kinross-shire is also home to several pubs, cafes and independent shops.

### Education

There are several primary schools across the parish – Arngask, Cleish, Fossoway, Kinross, Milnathort and Portmoak – whose catchment secondary is Kinross High School. Ministers provide chaplaincy at all the schools, and a number of primary schools visit and use our church buildings.

### Community Facilities

There is a health centre in Kinross with two GP practices – Orwell and St Serf's. There are private dental practices within the town of Kinross. Local children's hospice Rachel House, operated by CHAS, is also at the heart of the Kinross-shire community.

There are several care homes and assisted living complexes locally, which have enjoyed good links with our church. Small services of worship are conducted in Ashley House in Milnathort and responsibility for worship at Rumbling Bridge Care Home. Kinross Centre (a day centre for the elderly) operates from the Kinross Church Centre and, although a separate charity, has church members involved. A real sense of community exists and local events are generally well supported.

Kinross-shire Parish Church's former congregations have a history of working together, and established Kinross-shire Youth Enterprise (KYTHE), a youth work charity, in 2014. We continue to partner with KYTHE, with a number of church elders and members volunteering. As previously outlined, we are also linked through KYTHE Connects, with a worker due to be funded through the Church of Scotland Seeds for Growth fund, to develop KYTHE's youth ministry. KYTHE's mission is to 'Transform Young Lives' through innovative and dynamic Christian youth work. Find out more about this charity by clicking on the image.





## WORSHIP LIFE

### Sunday Mornings

Sunday morning worship currently takes place in all worship centres weekly, with teas and coffees served after the services in all buildings most weeks to extend our fellowship beyond the services. Morning services tend to be informally traditional with a blend of traditional and contemporary praise. Choirs and/or praise bands support worship at all worship centres.

Morning worship in Fossoway Church is currently at 9.45am. In both Kinross Church and Orwell Church, this is 10.30am. The Sacrament of Communion is celebrated quarterly in all our churches, with a monthly informal Communion in Kinross Church.

Monthly services also currently take place at our other church buildings, while these remain open for worship, although both are scheduled to be sold. Cleish Church services take place at 11.15am on the first Sunday morning of the month. In Portmoak Church, in the village of Scotlandwell, services are on the last Sunday of the month, at 3pm in winter and 6.30pm in summer.



Cleish Church



Portmoak Church

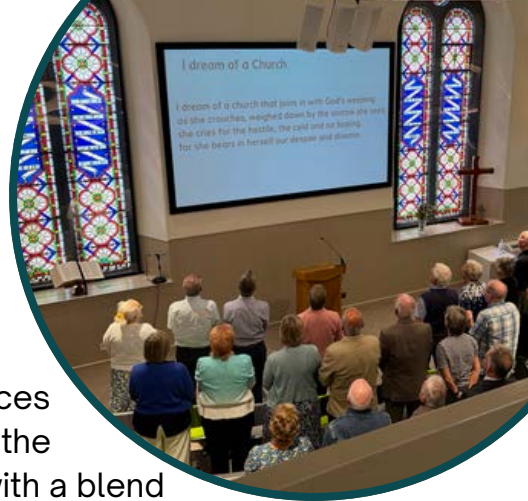
### Additional Worship

On Wednesdays, a midweek service takes place at Kinross Church Centre at 11.15am.

Contemporary forms of worship are also offered within our services: in Orwell Church at a monthly all-age service led by a Praise Band, and in Kinross Church through Sunday@7, a fortnightly evening service during school term times.



Monthly, on Saturday afternoons during term time, Messy Church is held in Orwell Church at 4pm, aiming to be a relaxed, accessible and welcoming way for families to experience church. This form of church has a pastoral and missional aspect that regularly attracts families who may not otherwise have a church connection or attend traditional services.



## Special Services

Special services in the church include some shared services, such as during Holy Week or the first Sunday of the new year. Harvest Thanksgiving is marked each year in all the churches. Remembrance Sunday services are also held in each church, followed by wreath-laying ceremonies at the various war memorials. Bereavement services are held in each church for those who have experienced loss, at different times of the year.

Additionally, there are services around Christmas, including Family and Watchnight services on Christmas Eve. One particular highlight is also the early morning outdoor service at the lochside at Kirkgate Park, Kinross, on Easter Sunday morning, against the beautiful backdrop of Loch Leven, followed by breakfast and fellowship in the nearby Kirklands Hotel.

As previously mentioned, services are held in local care homes Ashley House and Rumbling Bridge, and local primary schools also use the church for end of year or Christmas services. Fossoway also holds an annual Community Carol Service which involves Fossoway Primary School Choir.

## Practicalities of Worship

Alongside the ministers, members of the congregation are involved in Bible readings and in the leading of prayers and in some cases doing short talks. There are also two accredited worship leaders in the parish.

There are facilities for data projection in all the churches and all services are either live-streamed or recorded for later viewing.

Praise is drawn from a wide variety of sources but although hymnbooks are available in most of the churches the words of hymns etc are usually projected. The praise is most often led by an organ or piano but there are praise bands in Kinross and Orwell who lead worship at certain services. There are a number of regular organists.

## COMMUNICATION

Different approaches had been taken to communication across the legacy congregations and this is an area where the future strategy is still to be established under our united congregation, volunteers permitting. Church newsletters or magazines were perviously delivered to each of the former parishes, but in differing ways - some being delivered to every home in the parish while others were delivered specifically to members.

Our intention is to also utilise an electronic maildrop across the united parish, which is already established in parts of the parish. This is sent to members and adherents who sign up to receive it.



## PASTORAL CARE

In addition to the pastoral care offered by elders, specific pastoral needs are addressed by the Fellowship and Pastoral Team, who will meet regularly within our new team structure. Each of the constituent congregations has brought its own rich traditions of care – including district visiting by elders and others as well as dedicated pastoral and bereavement visitors. As we move forward, we are committed to combining the best of these approaches to create a thoughtful and unified pastoral practice that reflects the depth and warmth of our community.

Within our close-knit community, elders and members play a vital role in notifying ministers of any needs they become aware of, ensuring that pastoral ministry continues to be shared widely and compassionately across many hands and hearts.

In 2024 there were 42 funerals conducted across the former parishes. We have also celebrated 4 weddings and 6 baptisms.

There are care homes within our parish boundary, as well as the Kinross Centre, which is run in our own Church Centre, into which there is ongoing pastoral care and support.

Our flower ministry is a key part of our pastoral care strategy and was recently highlighted in Life and Work magazine. Whether marking joyful milestones, offering comfort, or simply remembering those unable to attend church regularly, flowers are seen as a heartfelt gesture that touch and uplift people.



## CHRISTIAN EDUCATION

There are children's and young people's groups in Fossoway, Kinross and Orwell during worship on Sundays.

There are weekly parent and toddler groups at Fossoway and Kinross. There is also a Sunday evening youth group in Kinross, as well as a Youth Group in Fossoway Church Hall, run jointly by our church and KYTHE. The Boys' Brigade and Girls' Association run on Friday evenings in Kinross.

A number of house groups meet across the united parish. There is also a branch of the Church of Scotland Guild. Occasional study groups meet from time to time.





## OUTREACH AND COMMUNITY

There are various ways in which we strive to connect faith with community and to share God's love through service, welcome, and partnership.



'Family Week', a longstanding annual holiday club which will be in its 40<sup>th</sup> year in 2026, takes place each summer, reaching up to 200 children, young people and families.



Many of our missional activities involve hospitality, with the weekly Refresh at Fossoway and monthly Tea and a Blether at Orwell. Craft groups also exist across the parish, offering opportunities for creativity and fellowship.



Let's Sing! is a 'tea and sing song' which meets monthly in the Kinross Church Centre. This is primarily for those living with dementia and their carers but open to anyone who enjoys a good sing.



All Friends Together – a group for adults with learning difficulties – also meets monthly in Kinross Church.

For the younger members of our community, the church facilitates Stepping Stones, a group for babies and toddlers which meets weekly during term time in Kinross Church. Fossoway babies and toddlers group meets weekly throughout the year, supported by church members. Groups for our older children and young people include Sunday youth group Crossfire and Dungeons and Dragons.

Extending beyond our own walls, the church is generally well regarded in the community and has a presence at a range of local events. Examples include our stand at the monthly Kinross Farmers' Market, running the tea tent at the annual Fossoway Gathering in Crook of Devon, and partnering with the Milnathort Primary Parent Council at the Milnathort Summer Fair. Church news is also regularly shared in the Kinross-shire Newsletter. Our locally funded associate minister is a regular presence at Glenfarg Community Centre's coffee lounge, building connections with this part of our parish.

## ECUMENICAL CONTEXT

We enjoy longstanding strong relations with other church denominations in Kinross-shire. There is a local clergy grouping involving Church of Scotland ministers and leaders from other denominations which meets monthly. In the surrounding area, churches of other denominations include St Paul's Scottish Episcopal Church, St James' Roman Catholic Church, Loch Leven Church (independent) and Kinross Gospel Hall. There continues to be an active working together.

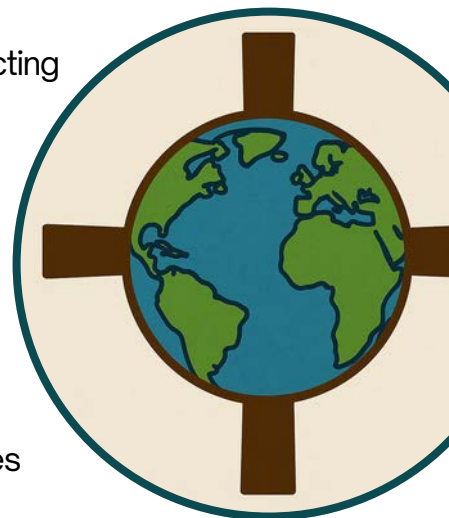
The congregation is not currently in a local ecumenical partnership.

## WORLD CHURCH

The former congregations recognised the value of supporting and connecting with Christians globally, and we are eager to build on this commitment in our union. We wish to actively support mission and development work beyond our local context. Regular prayer meetings receive news from around the world and pray for situations of need. A World Day of Prayer service is held annually.

In the parish, we are partnered with the Great Church of Debrecen in Hungary and twinned with the congregation of Mombwe in Malawi. There are also Mission Partnerships, for example with Lorna Ferguson who serves OMF in Japan.

We support Christian charities Christian Aid, Tearfund and Mission Aviation Fellowship (MAF). We are a Fairtrade congregation, and a Fairtrade stall is regularly offered after services.



## STEWARDSHIP AND FINANCE

Since the union of four parishes into Kinross-shire Parish Church, we have focused on bringing together our separate stewardship and financial arrangements.



The new congregation is blessed to have sufficient resources currently, including funds held by the General Trustees on our behalf from property income, such as the sale of the Milnathort Manse in March 2023.

Our regular income comes primarily from congregational giving, including Gift Aid, and we are deeply grateful for the continued support of our members and adherents. Rental income from community-based groups and organisations using our various premises also provides a further source of income, as does the receipt of occasional generous legacies and grants.

Stewardship in all its forms is essential to the future of our congregation. The newly united Kirk Session will be reflecting on how the distinctive contributions of each former parish can be built upon and enriched moving forward.

Overall, we remain committed to maintaining financial stability while continuing to resource our community-focused mission, which remains a priority.

## STAFFING

Ministers are supported in the running of the church's administration and activities by a team of enthusiastic elders and members but there are a small number of employed staff to support this. These include:

- Church Office Co-ordinator based in Kinross Church office
- Hall-Keeper for Kinross Church Centre
- Church Caretaker for Orwell Church and Hall
- Church Officer for Fossoway Church and Hall
- Organists employed across the parish





## PROPERTIES

Church property comprises:

- Five church buildings (two of which are scheduled to be sold)
- Church halls at Fossoway and Orwell, both with kitchen facilities
- Kinross Church Centre
- Milnathort office/shop
- Manse in Kinross
- Manse in Crook of Devon (vacant manse; details in Appendix)
- Cleish Beadle's Cottage (scheduled to be sold)

Our churches, halls and Kinross Church Centre are available for hire, as required and available. This is currently managed in different ways across the parish as we work to understand and align our various procedures.



Fossoway Church



Kinross Church



Orwell Church



Kinross Church Centre



Crook of Devon Manse



Milnathort Office

## Web Links

Included here are web links relevant to our church and local community

A single website and social media page for Kinross-shire Parish Church following our recent union are yet to be constructed, but information about us can be found using the current websites and social media accounts for our constituent former parishes.



[Kinross Church Website](#)

[Cleish and Fossoway Churches website](#)

[Orwell and Portmoak Church website](#)

[Presbytery of Perth website](#)

[Kinross-shire Community Council website](#)



[Fossoway Church Facebook Page](#)

[Kinross Church Facebook page](#)

[Orwell and Portmoak Church Facebook page](#)



[Fossoway YouTube Channel](#)

[Kinross YouTube Channel](#)

[Orwell YouTube Channel](#)



[Kinross Church Instagram](#)

[Sunday@7 Instagram](#)

## Contact Details

Convenor, Nominating Committee: Douglas Walker



**Email**

kpc.convenor2025@gmail.com

Clerk, Nominating Committee: Cara Chalmers



**Email**

kpc.clerk2025@gmail.com

Interim Moderator, Nominating Committee: Rev. Marc Prowe



**Email**

MProwe@churchofscotland.org.uk



**Phone**

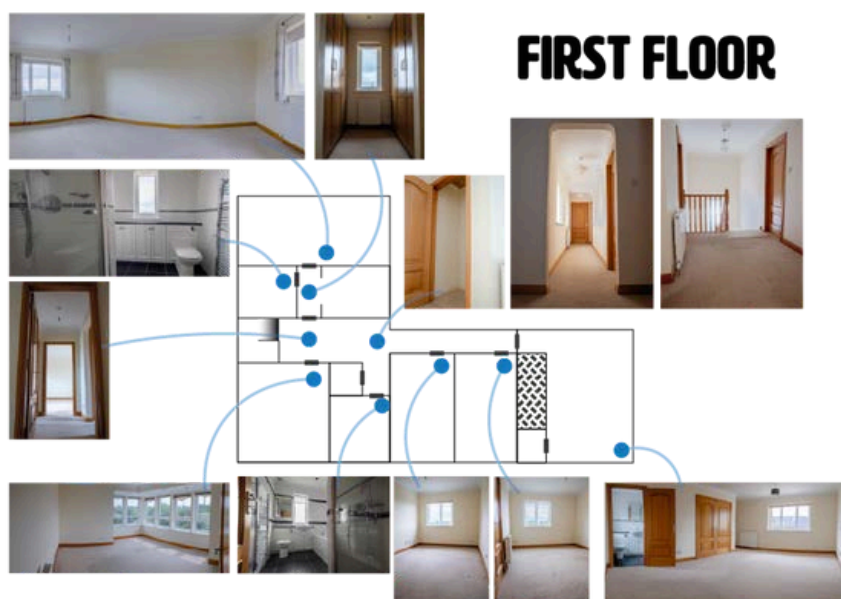
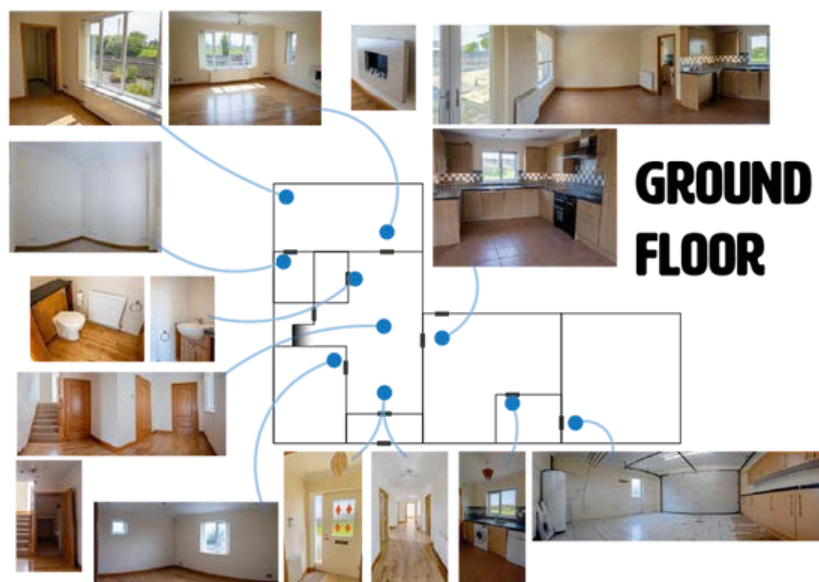
07485 694441

## Appendix: Crook of Devon Manse

The Crook of Devon manse is situated a short walk from Fossoway Church in the village of Crook of Devon. A detached villa, it was built in approximately 2010 and comprises four public rooms (which have recently been used as two lounges, a dining room and study), four bedrooms and four bathrooms, kitchen with patio doors and utility room, and integrated double garage. Heating is oil central heating and the house is double glazed throughout. There is ample storage space and a spacious, gated garden. This is predominantly paved and concreted currently, with a smaller section for flowers and plants.

The manse requires minor redecoration but this will be done in consultation with the minister taking up residence, taking into account individual preferences and requirements. We would also support requests to enhance and transform the garden.

Details of inspections and the most recent survey can be provided to anyone called for interview.

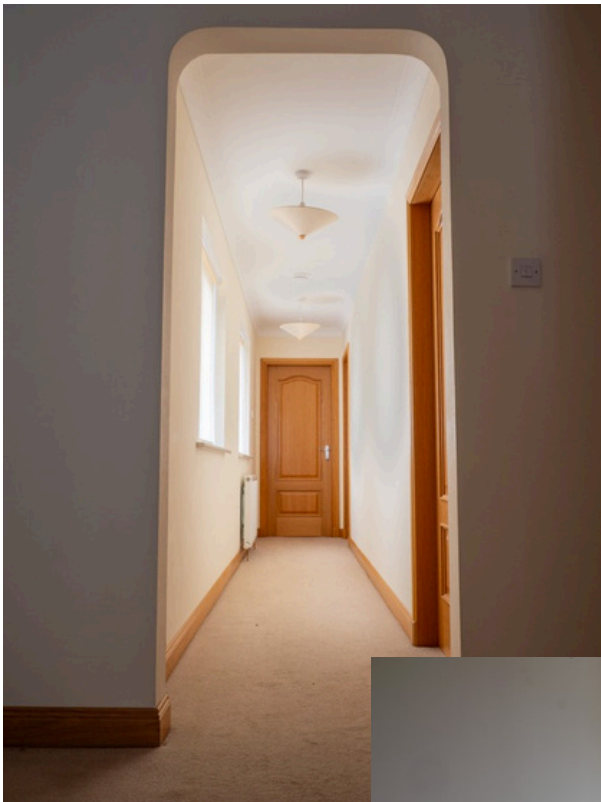




## Appendix: Crook of Devon Manse



## Appendix: Crook of Devon Manse





## Appendix: Crook of Devon Manse

